

ROOSEVELT

CONSTRUCTION NEWSLETTER

LEASE CRUTCHER
LEWIS

February 2016

Portland Public Schools, Roosevelt High School Modernization Project

PROJECT TEAM CONTACTS

Nate Buddie : Project Manager
971.563.0020 nate.buddie@lewisbuilds.com

Chad Nielsen : Superintendent
503.572.0135 chad.nielson@lewisbuilds.com

UPCOMING MILESTONES

- New Gym steel decking to be substantially complete end of this month
- New Gym elevated deck concrete will be pouring through this month
- New Gym steel beams and columns will be occurring through this month
- New Theater slab-on-grade to pour February 5th
- New Theater CMU walls are in progress and should complete February 19th
- New Kitchen/Commons slab-on-grade to pour February 29th
- New Media Center basement art rooms are being framed, MEP rough-in completed, and sheetrock will begin at the end of this month
- New Media Center/Library second level structural shearwalls will continue through this month

The New Gym is shaping up with structural steel and decking being placed in all areas this month. Concrete on the elevated decks at the New Gym area will be taking place this month, closely followed by MEP/F overhead rough in and fireproofing. The New Theater CMU walls and slab-on-grade concrete is in process this month. The New Kitchen/Commons slab-on-grade will pour towards the end of the month.

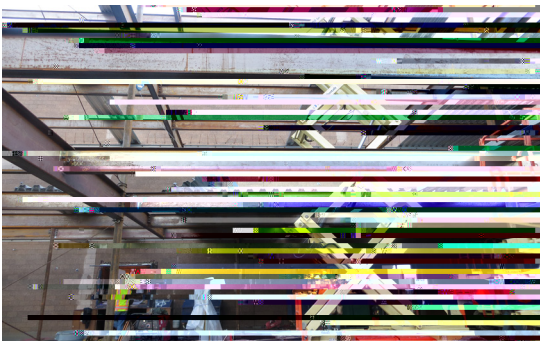
Down in the New Media Center basement, the new art rooms are being framed with MEP/F rough-in and sheetrock will begin at the end of the month. More structural concrete shearwalls are being placed on the 2nd level in the New Media Center/Library as well.

The full spectrum of construction activity is taking place with structure being built on one end and a renovation beginning to take shape in the basement of what will become the new art classrooms. We will soon be erecting steel while paint, flooring, and interior finishes are happening simultaneously!

Sincerely,

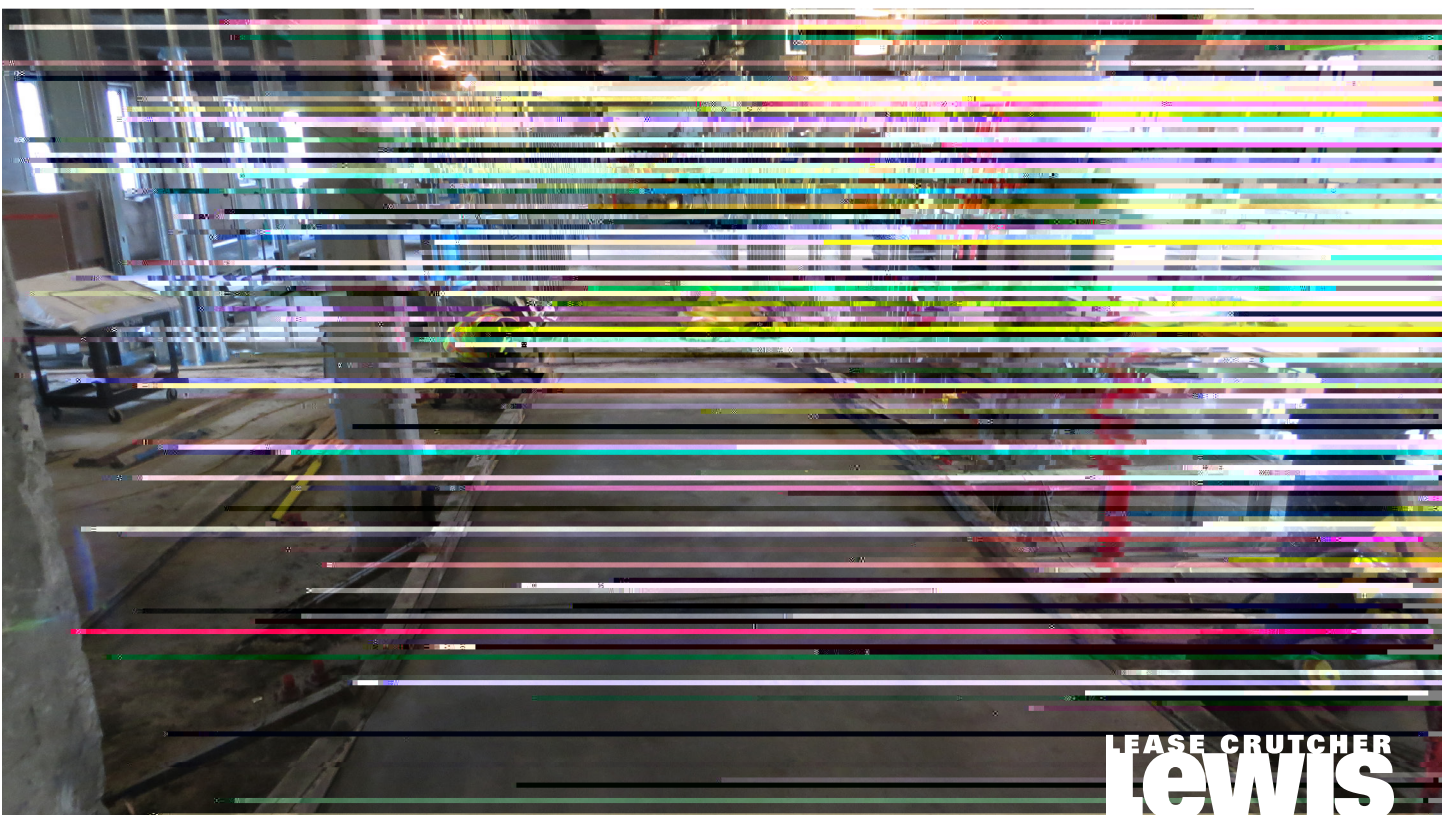


Michael C. Kingham
Senior Project Engineer, Roosevelt High School Modernization



ROOSEVELT MODERNIZATION

February 2016



LEASE CRUTCHER
Lewis